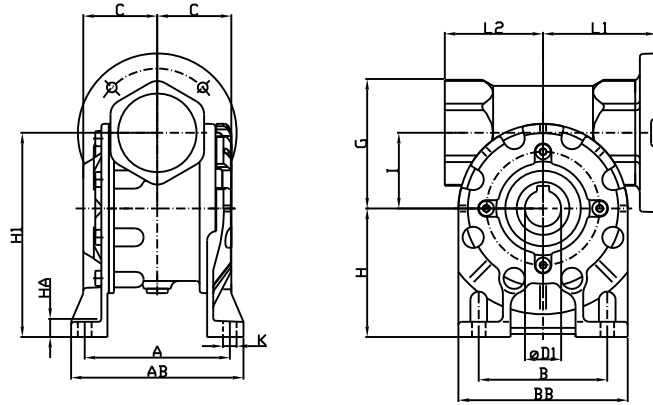
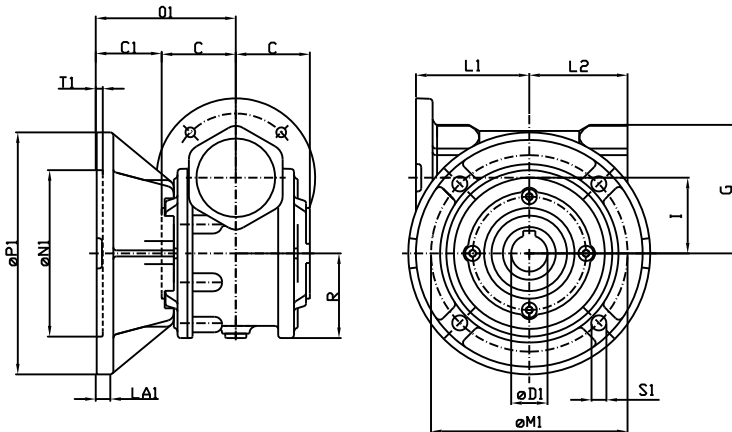


MAATSCHETS: REDUKTOR MRT..

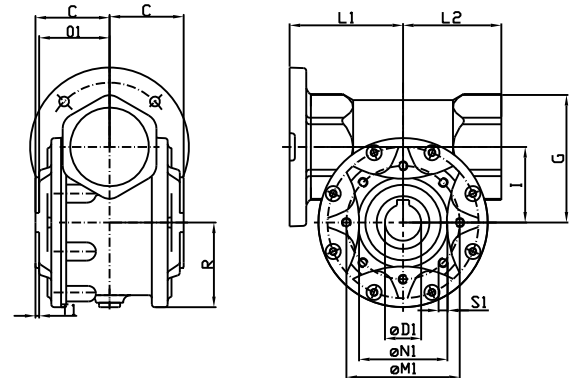
MRT . . A



MRT . . FF



MRT . . FT



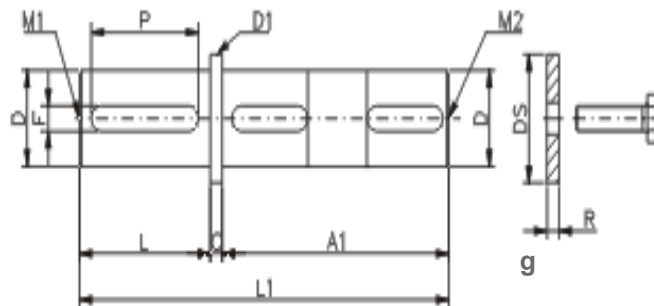
TYPE	A	AB	B	BB	C	D1H7	Dk6	E	F	GA	G	H	H1	H2	HA	I	K	R
(M)RT 30A	66	80	50-55	82	31,5	14	9	20	5	16,3	51	52	82	22	6	30	7	42
(M)RT 40A	84	100	70	96	41	19	11	23	6	21,8	70	71	111	31	8	40	7	48
(M)RT 50A	96	114	85	112	49	24	14	30	8	27,3	84	85	135	35	10	50	9	56
(M)RT 60A	111	137	95	140	60	25	19	40	8	28,3	99	100	160	40	12	60	11	70
(M)RT 70A	115	141	120	156	60,5	28	19	40	8	31,3	109	115	185	45	12	70	11	76
(M)RT 80A	147	180	140	180	70	35	24	50	10	38,3	128	142	222	62	13	80	11	90

FT flensuitvoering

FF flensuitvoering.

TYPE	C1	L1	L2	L3	LA	SA	M1	N1	O1	S1	T1	M2	N2	P2	O2	S2	T2
(M)RT 30A	18,5	55	46	48	6	M3x9	65	55	29	M6x7	2,5	65	50	80	50	6,5	4
(M)RT 40A	41	65	57	63	11	M4x10	65	50	38,5	M6x12	2,5	115	95	140	82	9	4
(M)RT 50A	43	75	65	73	11	M5x12	75	60	46,5	M6x12	2,5	130	110	160	92	10	4
(M)RT 60A	42	93	75	91	12	M6x16	85	70	57,5	M6x12	2,5	165	130	200	102	11	4
(M)RT 70A	51	101	81	99	12	M6x16	100	80	57	M8x16	3,5	165	130	200	111,5	11	5
(M)RT 80A	50	110	95	108	12	M8x19	130	110	66,5	M10x16	3,5	165	130	200	120	11	5

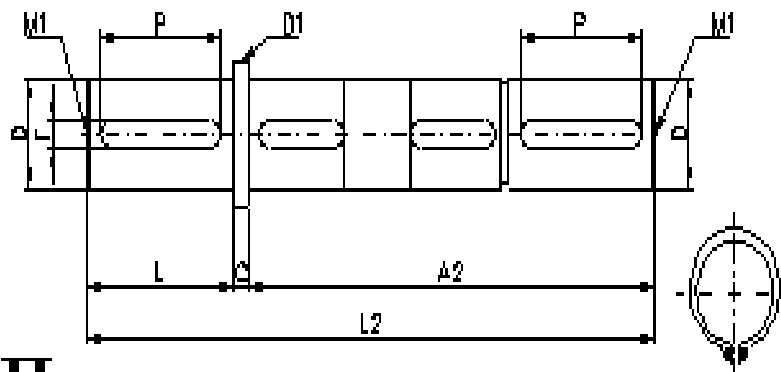
MAATSCHETS ACCESSOIRES: UITGAANDE AS 1 aseinde



I

Type MRT / RT	A1	A2	C	Dh7	D1	L	L1	L2	F	M1 s DIN 332	M2	k	
												I	II
28	56	89	1	14	17	30	120	87	5	M5	M5	0,1	0,15
40	80	132	10	19	23	40	182	130	6	M6	M6	0,3	0,4
50	97	158	10	24	28	50	218	157	8	M8	M8	0,55	0,75
60	118	185	5	25	30	60	250	183	8	M10	M8	0,7	0,9
70	120	191	10	28	35	60	261	190	8	M10	M8	0,9	1,25
80	138	205	5	35	40	60	270	203	10	M12	M8	1,5	2
100	150	234	10	40	46	80	324	240	12	M16	M12	2,4	3,2
120	170	264	10	45	51	90	364	270	14	M16	M12	3,4	4,6
150	218	323	10	55	62	100	433	328	16	M20	M16	6,1	8,1
180	262	377	10	60	68	110	497	382	18	M20	M16	4,8	11

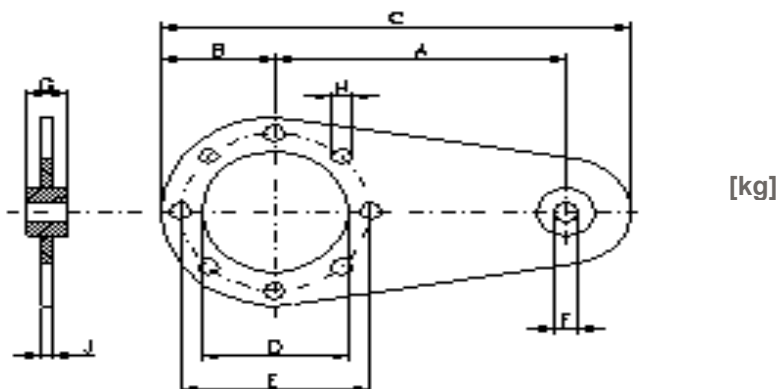
MAATSCHETS ACCESSOIRES: UITGAANDE AS 2 aseinden



II

Type MRT / RT	A1	A2	C	Dh7	D1	L	L1	L2	F	M1 s DIN 332	M2	kg	
												I	II
28	56	89	1	14	17	30	120	87	5	M5	M5	0,1	0,15
40	80	132	10	19	23	40	182	130	6	M6	M6	0,3	0,4
50	97	158	10	24	28	50	218	157	8	M8	M8	0,55	0,75
60	118	185	5	25	30	60	250	183	8	M10	M8	0,7	0,9
70	120	191	10	28	35	60	261	190	8	M10	M8	0,9	1,25
80	138	205	5	35	40	60	270	203	10	M12	M8	1,5	2
100	150	234	10	40	46	80	324	240	12	M16	M12	2,4	3,2
120	170	264	10	45	51	90	364	270	14	M16	M12	3,4	4,6
150	218	323	10	55	62	100	433	328	16	M20	M16	6,1	8,1
180	262	377	10	60	68	110	497	382	18	M20	M16	4,8	11

MAATSCHETS ACCESSOIRES: REACTIEARM



Reaction arm [mm]

Type	A	B	C	D	E	F	G	H	J	mass
MRT-RT 28	80	34	132	42	54	8	-	6,4	3	0,2
MRT-RT 40	100	39	161	50	65	8	14	7	4	0,25
MRT-RT 50	100	44	170	60	75	10	20	7	4	0,3
MRT-RT 60	150	53	233	70	85	10	20	9	5	0,57
MRT-RT 70	200	62,5	295	80	100	14	24	9	6	1,1
MRT-RT 80	200	77,5	315	110	130	14	24	11	6	1,25
MRT-RT 100	230	77,5	345	110	130	14	24	11	6	1,35
MRT-RT 120	260	95	395	130	165	16	26	13	8	2,45
MRT-RT 150	300	125	480	180	215	18	26	15	8	3,7
MRT-RT 180	350	150	545	230	265	25	30	17	8	4

JL 56 -160



JL56



JL63

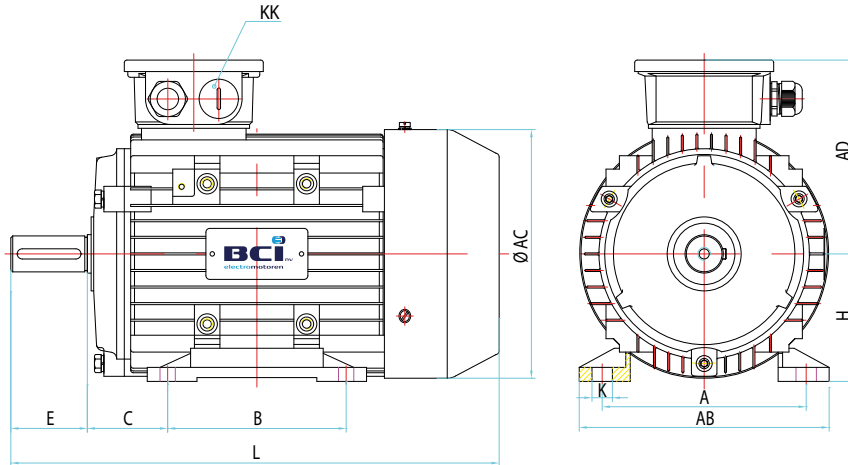


JL71

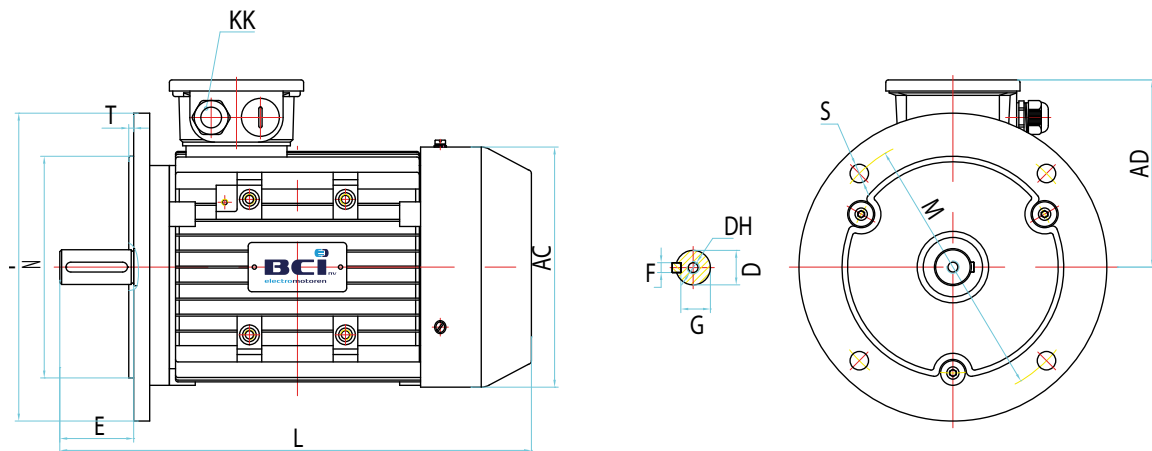


JL80

B3



B5



FRAME	B3										B5									
	A	AB	AC	AD	B	C	D	DH	E	F	G	H	K	KK Metric	L	M	N	P	S	T
JL56	90	115	110	100	71	36	9	M4X12	20	3	7.2	56	5.8	2-M20X1.5	170	100	80	120	7	3
JL63	100	135	130	115	80	40	11	M4X12	23	4	8.5	63	7	2-M20X1.5	225	115	95	140	10	3
JL71	112	150	145	120	90	45	14	M5X12	30	5	11	71	7	2-M20X1.5	250	130	110	160	10	3.5
JL80	125	165	175	145	100	50	19	M6X16	40	6	15.5	80	10	2-M25X1.5	295	165	130	200	12	3.5
JL90S	140	180	195	155	100	56	24	M8X19	50	8	20	90	10	2-M25X1.5	315	165	130	200	12	3.5
JL90L	140	180	195	155	125	56	24	M8X19	50	8	20	90	10	2-M25X1.5	340	165	130	200	12	3.5
JL100L	160	205	215	180	140	63	28	M10X22	60	8	24	100	12	2-M32X1.5	385	215	180	250	15	4
JL112M	190	230	240	190	140	70	28	M10X22	60	8	24	112	12	2-M32X1.5	400	215	180	250	15	4
JL132S	216	270	275	210	140	89	38	M12X28	80	10	33	132	12	2-M32X1.5	470	265	230	300	15	4
JL132M	216	70	275	210	178	89	38	M12X28	80	10	33	132	12	2-M32X1.5	510	265	230	300	15	4
JL160M	254	320	330	255	210	108	42	M16X36	110	12	37	160	15	2-M40X1.5	615	300	250	350	19	5
JL160L	254	320	330	255	254	108	42	M16X36	110	12	37	160	15	2-M40X1.5	670	300	250	350	19	5

JL 56 -160



JL90

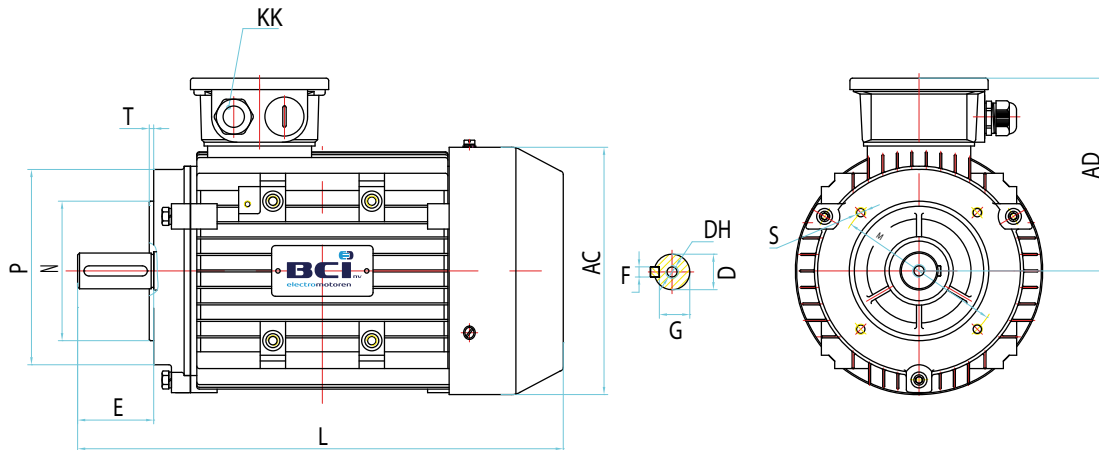


JL112

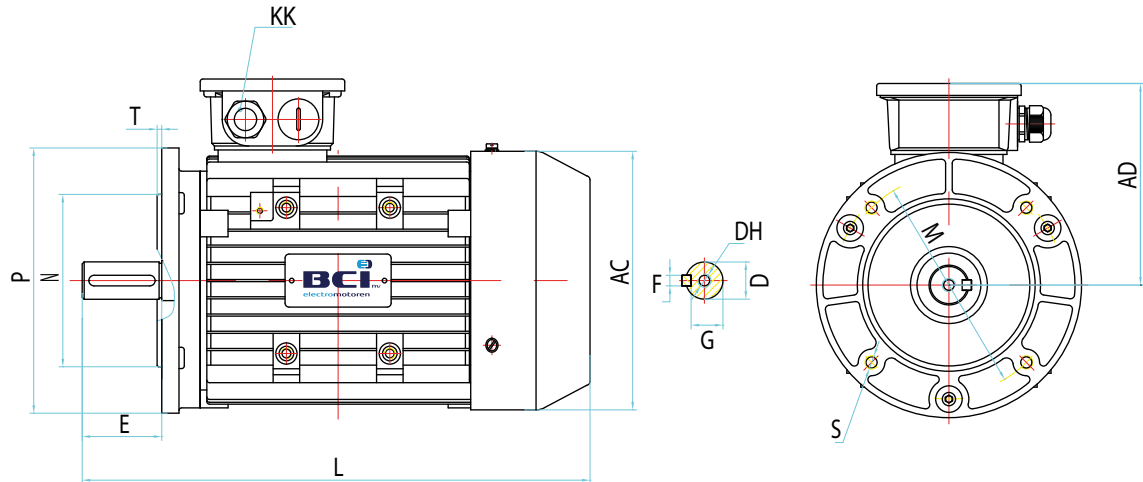


JL132

B14A



B14B



FRAME	B14A										B14B									
	AC	AD	D	DH	E	F	G	KK METRIC	L	M	N	P	S	T	M		N	P	S	T
JL56	110	100	9	M4X12	20	3	7.2	2-M20X1.5	170	65	50	80	M5	2.5	85	70	105	M6	2.5	
JL63	130	115	11	M4X12	23	4	8.5	2-M20X1.5	225	75	60	90	M5	2.5	100	80	120	M6	2.5	standaard
JL71	145	120	14	M5X12	30	5	11	2-M20X1.5	250	85	70	105	M6	2.5	85	70	105	M6	2.5	JL speciaal
JL80	175	145	19	M6X16	40	6	15.5	2-M25X1.5	295	100	80	120	M6	3	115	95	140	M8	3	
JL90S	195	155	24	M8X19	50	8	20	2-M25X1.5	315	115	95	140	M8	3	130	110	160	M8	3.5	
JL90L	195	155	24	M8X19	50	8	20	2-M25X1.5	340	115	95	140	M8	3	130	110	160	M8	3.5	
JL100L	215	180	28	M10X22	60	8	24	2-M32X1.5	385	130	110	160	M8	3.5	165	130	200	M10	3.5	
JL112M	240	190	28	M10X22	60	8	24	2-M32X1.5	400	130	110	160	M8	3.5	165	130	200	M10	3.5	
JL132S	275	210	38	M12X28	80	10	33	2-M32X1.5	470	165	130	200	M10	3.5	215	180	250	M12	4	
JL132M	275	210	38	M12X28	80	10	33	2-M32X1.5	510	165	130	200	M10	3.5	215	180	250	M12	4	
JL160M	330	255	42	M16X36	110	12	37	2-M40X1.5	615	215	180	250	M12	4	-	-	-	-	-	
JL160L	330	255	42	M16X36	110	12	37	2-M40X1.5	670	215	180	250	M12	4	-	-	-	-	-	